



BRIDLE PATH | \$13,870,000

1.88 Acres on 3 Lots | 9-Bedroom, 10.1-Bathroom Pool Home | 5.5 Air-Conditioned Garage Spaces | 18,061 Air-Conditioned Square Feet | Impact Glass | State-of-the-Art Fitness Center | Private 2-Bedroom Guest House | Spectacular Pool and Spa with Waterfall | Largest Home in Palm Beach Polo & Country Club

Co-Listed with Ron Neal, 561-371-0591.



RANCH COLONY | JUPITER | \$8,450,000

Spectacular Architectural Design | Beautiful 20-Acre Equestrian Retreat | 5-Bedroom, 5.1-Bathroom Home | Saltwater Pool | Exclusive Gated Ranch Colony Community | Gourmet Chef's Kitchen | Full Impact Glass and Generator | European White Oak Floors | Guest House Above 3-Car Garage | Outdoor Living and Dining | 6 Paddocks | Large Arena | 6-Stall Center-Aisle Stable with Staff Quarters | Elevator

Co-Listed with Craig Bretzlaff, 561-601-7557 and Heather Bretzlaff, 561-722-6163.



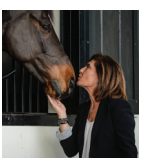
MARTHA W. JOLICOEUR
MARTHASPROPERTIES.COM



HYPOLUXO ISLAND | \$3,450,000

4-Bedroom, 3.1-Bath Estate on the Intracoastal Waterway | Sunrise Views | Exposed Beams | Gourmet Kitchen with Custom Cabinetry | Impact Glass | Hardwood Floors Throughout | Covered Lanai and Open Patio Area | Heated Saltwater Pool and Spa | Private Dock with Lift

Co-Listed with Sharon Loayza, 786-307-0689.



MARTHA W. JOLICOEUR, PA
BROKER ASSOCIATE
561 797 8040
www.marthasproperties.com



Douglas Elliman EST. 1911
REAL ESTATE

elliman.com